

www.simonmoyes.com

Call 0207 323 0040 | [Book Appointment](#)

Simon Moyes
Consultant Orthopaedic Surgeon

[Home](#) | [Treatment](#) | [About](#) | [Patients](#) | [Team](#) | [Contact](#)

Simon specialises in arthroscopic and minimally invasive treatment for problems of the knee, shoulder, foot and ankle.

[Book Appointment](#)

9000
Operations to date

270
Patients per month

25%
Surgical strike rate

Simon Moyes specialises in keyhole - or arthroscopic - surgery. This is a highly sophisticated, minimally invasive technique which means you spend less time in hospital and you are more likely to have a quick recovery.

Shoulder 

Foot 

Ankle 

Ankle Arthroscopy

[HOME](#) [PATIENTS' SITE](#) [SURGEONS' SITE](#) [VIDEOS](#) [ABOUT SIMON MOYES](#) [CONTACT](#) [LINKS](#)



Ankle Arthroscopy Website

Simon Moyes specialises in keyhole – or arthroscopic – surgery. This site is dedicated to conditions of the ankle joint that are treated by Simon. Patients can find all the information they need about some of the more common ankle problems, while surgeons and medical professionals can find an up-to-date medical resource for those involved in or studying ankle arthroscopy.

Quick Search

Go straight to the specific page you are looking for by using the drop down below:

Specific Condition

Search Site

Patients' Site

An outline of common ankle problems, with information about how the injury / ailment feels, what surgery is likely and the projected recovery time.

[➤ Click here for the Patients' Site](#)

Surgeons' Site

An in-depth resource about all aspects of ankle arthroscopy for medical professionals. Contains highly-referenced documentation of the procedure, citing examples from the early history to current findings.

[➤ Click here for the Surgeons' Site](#)

A close-up photograph of a person's right ankle being held by a hand. A blue line is drawn on the skin of the ankle, indicating the location of an injury. The background is a light, semi-transparent grey.

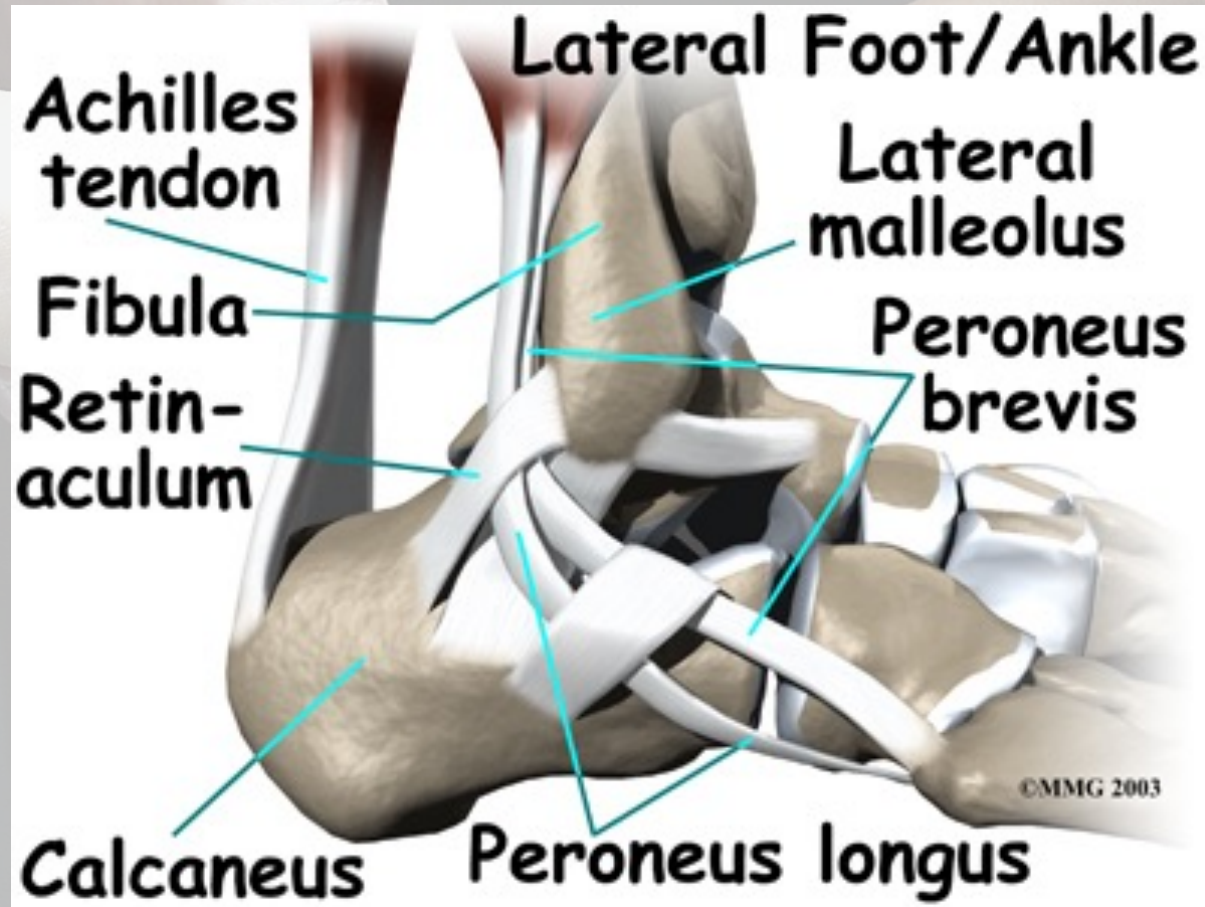
Ankle Inversion Injuries

Presented by Mr Simon Moyes

Incidence 1/10,000 people per day



Lateral Ankle Structures



Potential Injuries

1. Fractures
2. Lateral ligament injuries
3. Peroneal tendon injuries
4. Syndesmosis injuries
5. Talar Dome injuries
6. Any combination of the above

Fractures Fibular



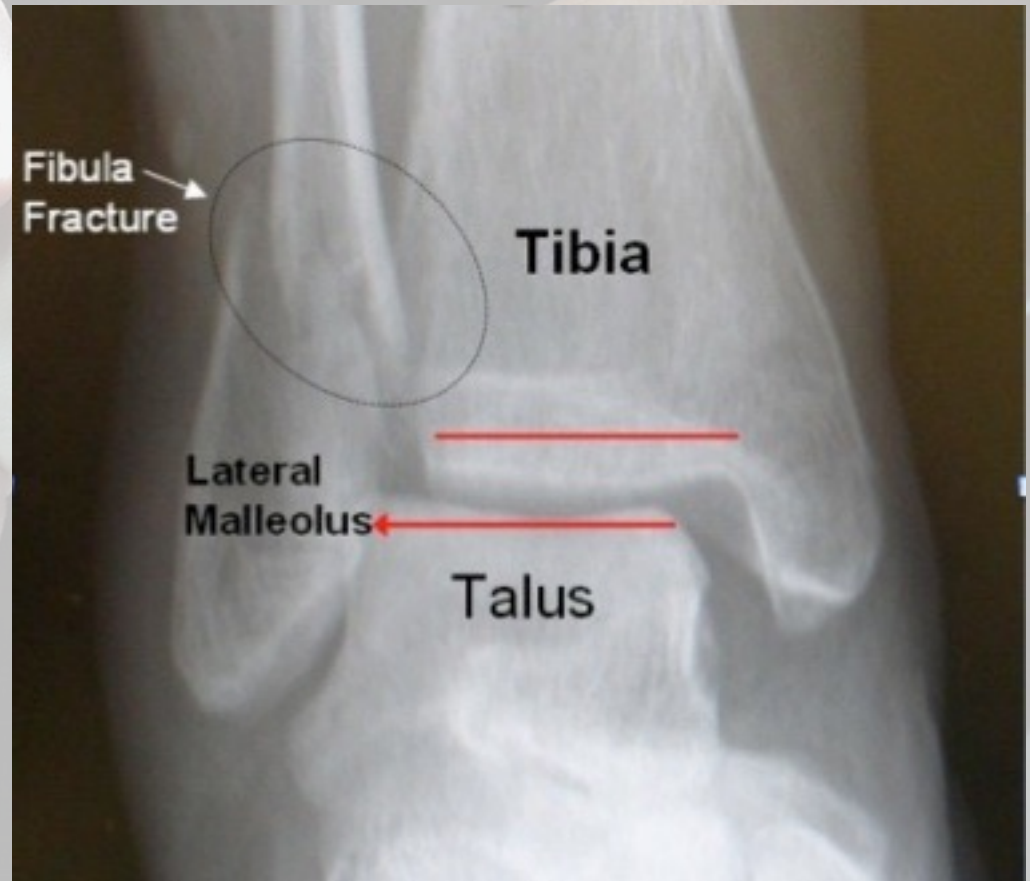
Fractures

5th Metatarsal



Fractures

Ankle Fractures



Fractures

Cuboid Fractures



Lateral Ligament Injuries



Lateral Ligament Injuries



Lateral Ligament Injuries



Peroneal Tendon Injuries



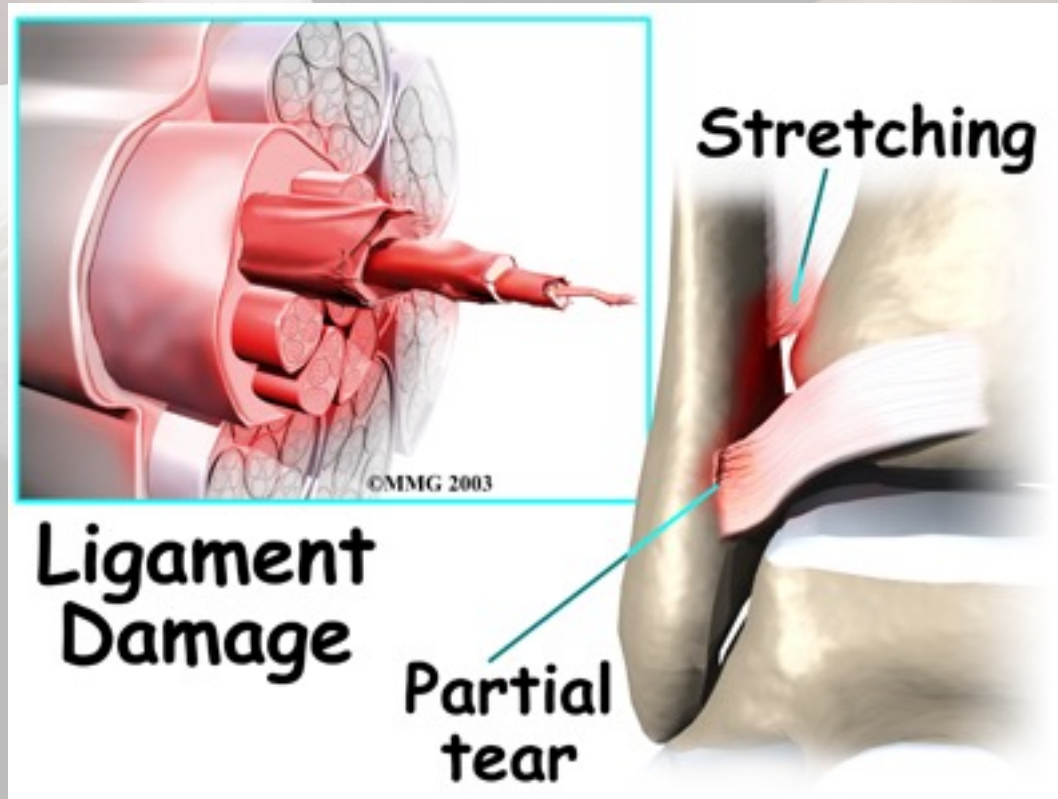
Peroneal Tendon Injuries



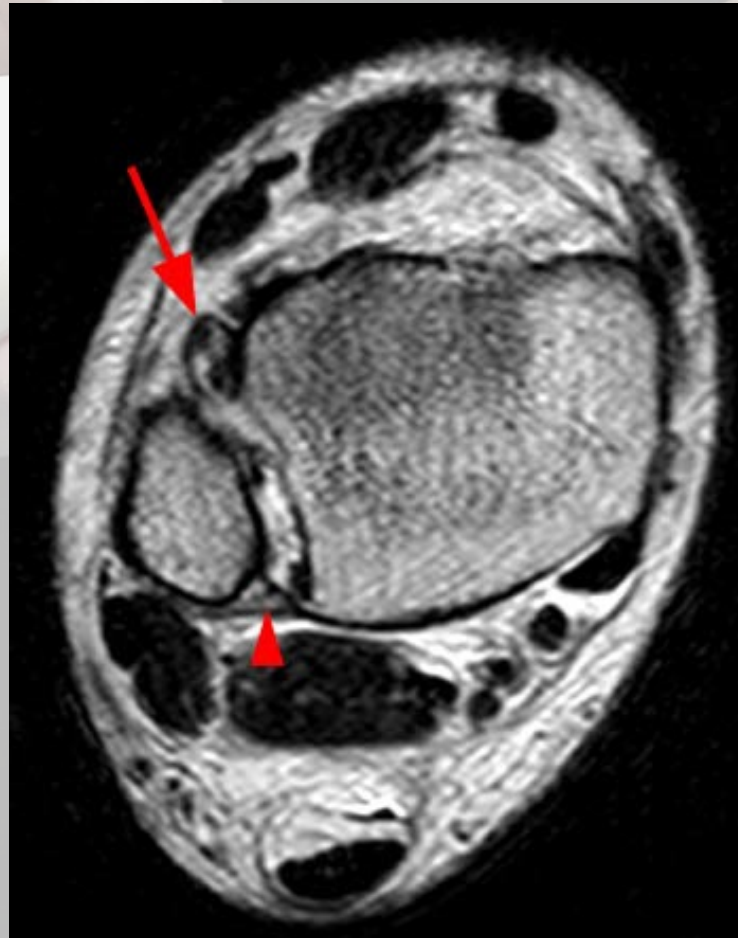
Syndesmosis Injuries



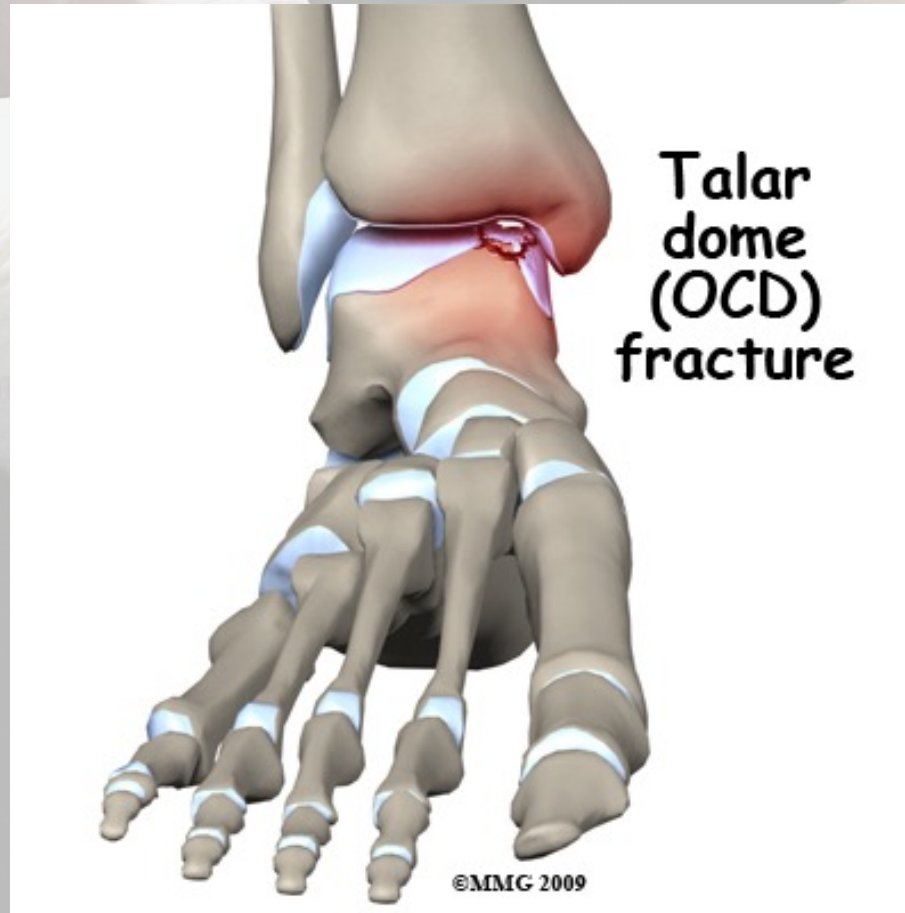
Syndesmosis Injuries



Syndesmosis Injuries



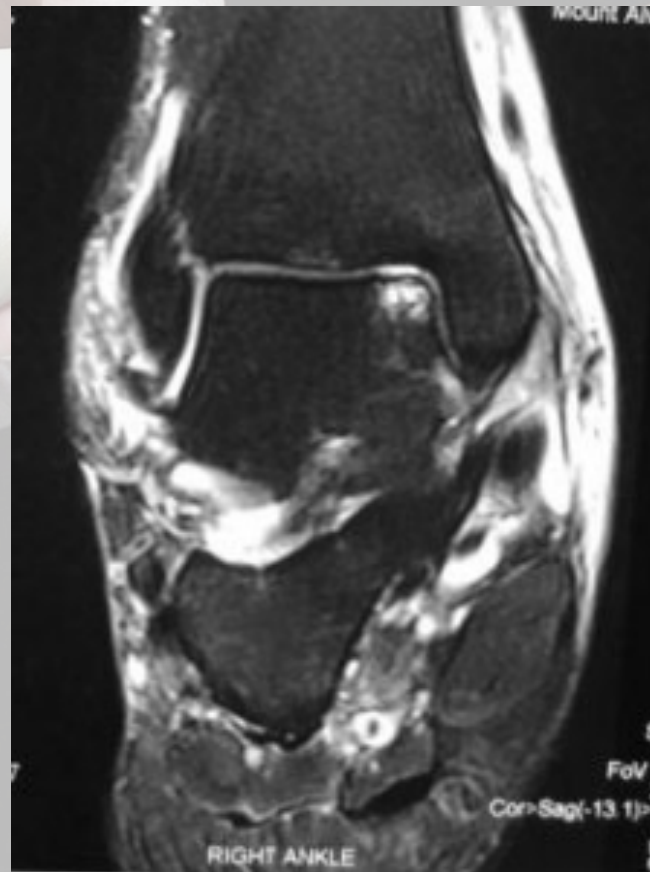
Talar Dome Injuries



Talar Dome Injuries



Talar Dome Injuries





A close-up photograph of a hand holding a foot, likely in a medical or caregiving context. The hand is positioned on the left, with fingers gently gripping the side of the foot. The foot is the central focus, showing the heel and the side of the foot. The background is blurred, suggesting a clinical or hospital setting. The text "Thank You" is overlaid in the center of the image in a black, serif font.

Thank You